



**Howden**

# **V** VENTSIM™

## *Version 6: The New Version*

Martin Griffith  
Software Team Leader  
Howden Ventsim

**Revolving Around You™**

© Howden Group 2023

- **Don Wallace**
- **Craig Christensen**
- **Larysa McGookey**



### New Graphics:

- Airway guides
- Textured airway graphics
- Arrow colours

### New UI:

- Error form
- Activity Track Creation
- Block Tool
- Stage switching

### Data:

- Databox positioning
- Message Box Layout and Copying
- Stage Graph

### Features:

- Improved binding speed
- Simplify References
- Contaminant Simulation UI
- Dust profile simulations



### New Graphics:

- Airway guides
- Textured airway graphics
- Arrow colours

### New UI:

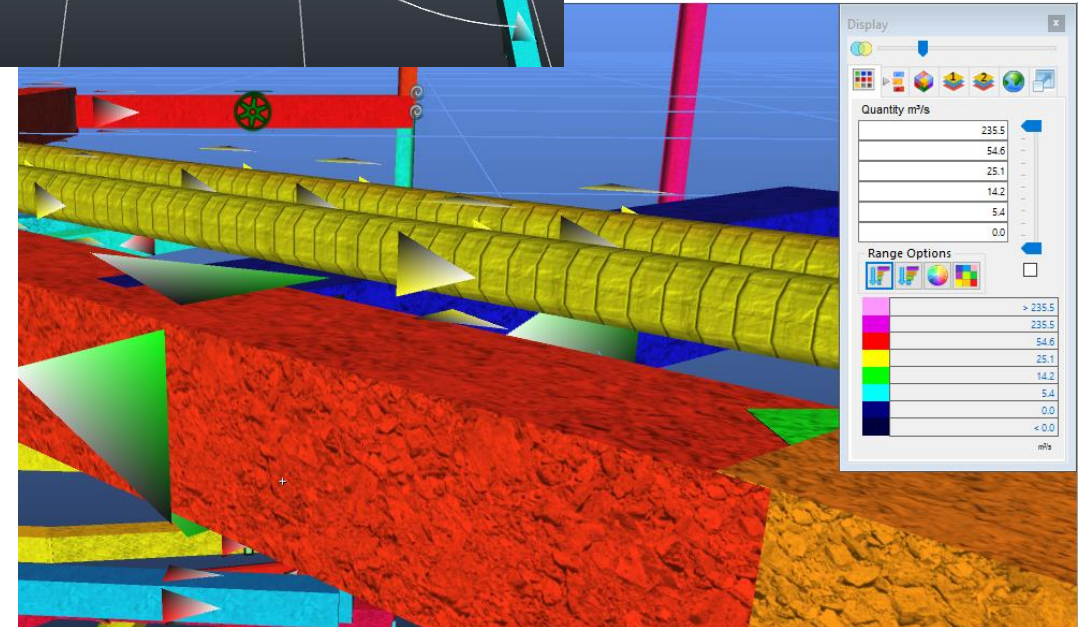
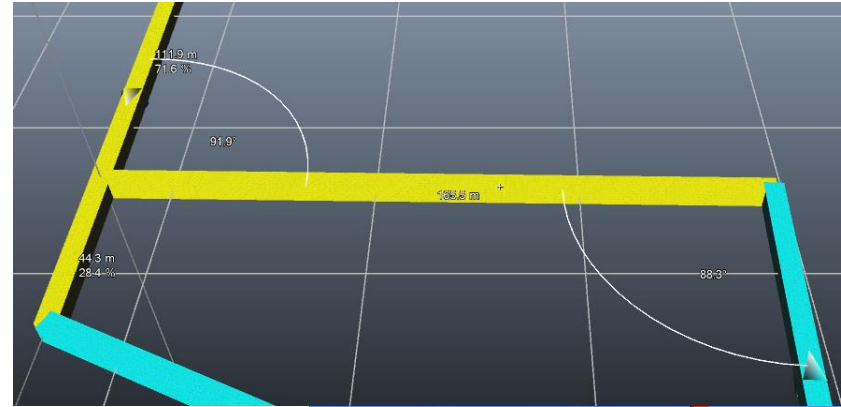
- Error form
- Activity Track Creation
- Block Tool
- Stage switching

### Data:

- Databox positioning
- Message Box Layout and Copying
- Stage Graph

### Features:

- Improved binding speed
- Simplify References
- Contaminant Simulation UI
- Dust profile simulations



### New Graphics:

- Airway guides
- Textured airway graphics
- Arrow colours

### New UI:

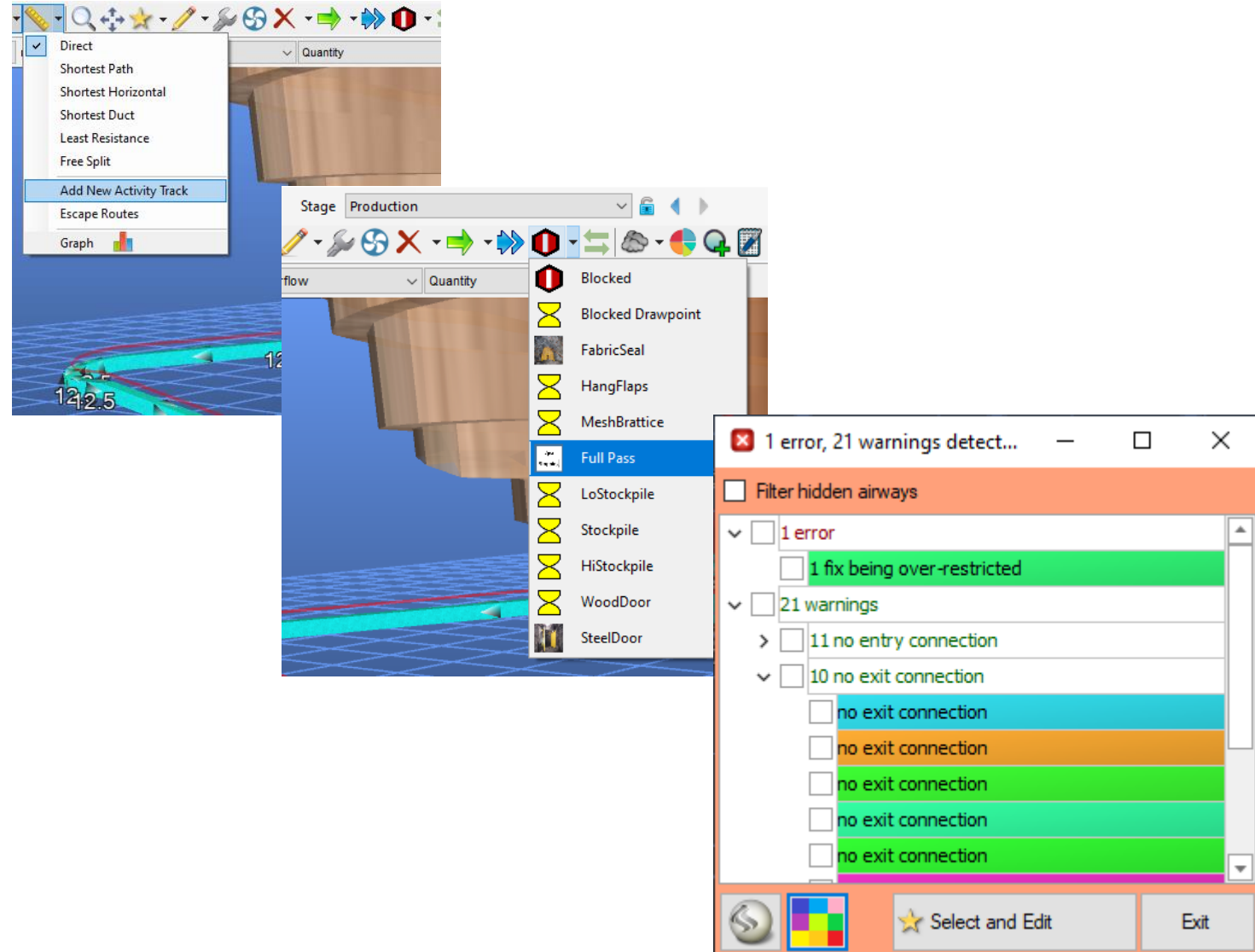
- Error form
- Activity Track Creation
- Block Tool
- Stage switching

### Data:

- Databox positioning
- Message Box Layout and Copying
- Stage Graph

### Features:

- Improved binding speed
- Simplify References
- Contaminant Simulation UI
- Dust profile simulations



### New Graphics:

- Airway guides
- Textured airway graphics
- Arrow colours

### New UI:

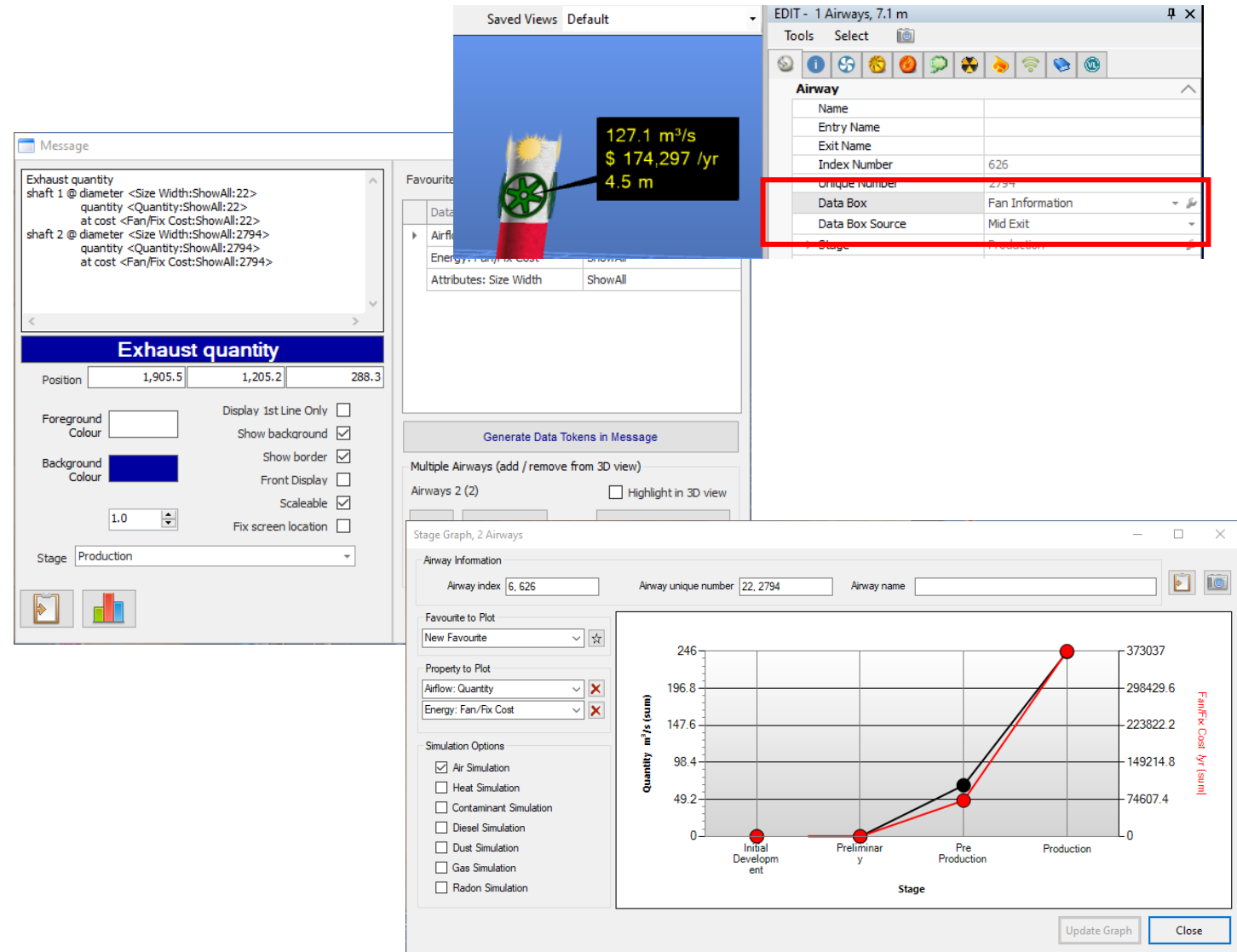
- Error form
- Activity Track Creation
- Block Tool
- Stage switching

### Data:

- Databox positioning
- Message Box Layout and Copying
- Stage Graph

### Features:

- Improved binding speed
- Simplify References
- Contaminant Simulation UI
- Dust profile simulations



The screenshot displays the Ventsim DESIGN 6.0 software interface. Key elements include:

- Message Window:** Shows exhaust quantity data for two shafts, including diameter, quantity, and cost.
- Exhaust quantity Databox:** A floating window displaying position coordinates (1,905.5, 1,205.2, 288.3), foreground and background colors, and simulation options like 'Display 1st Line Only' and 'Show background'.
- 3D View:** Shows a shaft with a green arrow and a data box displaying: 127.1 m<sup>3</sup>/s, \$ 174,297 /yr, and 4.5 m.
- EDIT - 1 Airways, 7.1 m:** A table listing airway properties. The 'Data Box' and 'Data Box Source' rows are highlighted with a red box.
- Stage Graph, 2 Airways:** A line graph showing 'Quantity m<sup>3</sup>/s (cum)' and 'Fan/Fix Cost /yr (sum)' across stages: Initial Development, Preliminary, Pre Production, and Production. The graph shows a sharp increase in both metrics during the Production stage.

Shaft	diameter	quantity	at cost
shaft 1	<Size Width:ShowAll:22>	<Quantity:ShowAll:22>	<Fan/Fix Cost:ShowAll:22>
shaft 2	<Size Width:ShowAll:2794>	<Quantity:ShowAll:2794>	<Fan/Fix Cost:ShowAll:2794>

Property	Value
Name	
Entry Name	
Exit Name	
Index Number	626
Unique number	2794
Data Box	Fan Information
Data Box Source	Mid Exit
Stage	Production

Stage	Quantity m <sup>3</sup> /s (cum)	Fan/Fix Cost /yr (sum)
Initial Development	0	0
Preliminary	0	0
Pre Production	~49.2	~74607.4
Production	~246	~373037

### New Graphics:

- Airway guides
- Textured airway graphics
- Arrow colours

### New UI:

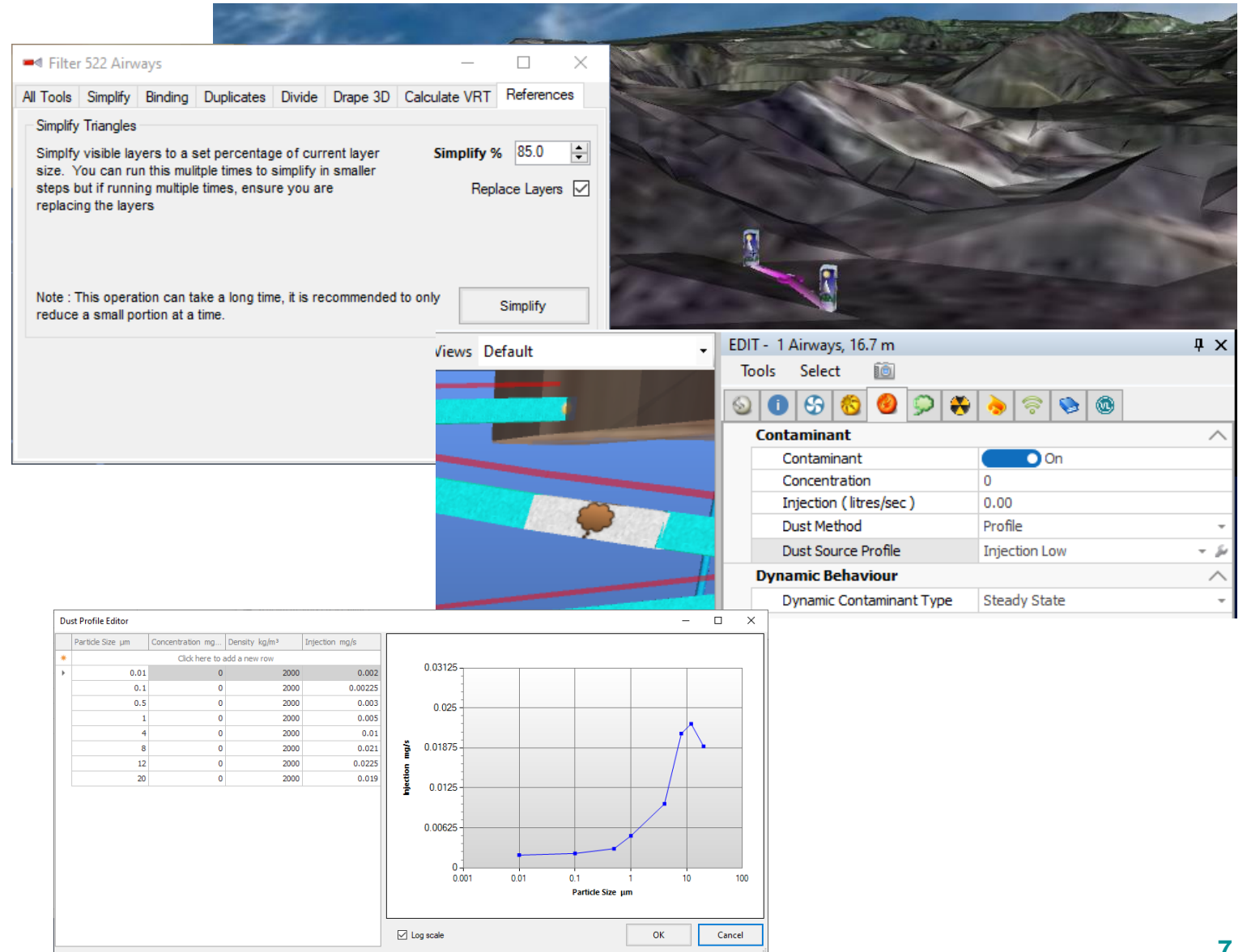
- Error form
- Activity Track Creation
- Block Tool
- Stage switching

### Data:

- Databox positioning
- Message Box Layout and Copying
- Stage Graph

### Features:

- Improved binding speed
- Simplify References
- Contaminant Simulation UI
- Dust profile simulations





**Thank you**

**Revolving Around You™**

© Howden Group 2023